



# SALTAIRE

ST. PETERSBURG



# PENTHOUSE NORTH

Sales Hosted by Smith & Associates Real Estate  
330 Beach Drive NE | St. Petersburg, FL 33701  
[SaltaireStPete.com](http://SaltaireStPete.com) | 727-240-3840

**KOLTER**  
Smith &  
Associates Real Estate

All dimensions are approximate. The floorplan is subject to change without notice. The seller reserves the absolute right, in its sole judgement and discretion, to substitute appliances, materials, fixtures and equipment of equal or greater value for those specified. There are various methods of calculating the total square footage of a condominium unit, and depending on the method of calculation, the quoted square footage of a condominium unit may vary more than a normal amount. The total condominium square footages as shown in this brochure are based on the "Architectural Method" of measurement which measures the exterior perimeter of the condominium unit, and also includes interior columns and fifty percent of demising walls. The method for calculating residential square footage used in marketing materials is different than the method used for calculating residential square footage in the condominium documents. Please see the Declaration of Condominium for more information. The model shown includes options and upgrades that are not a part of a base residence pricing.

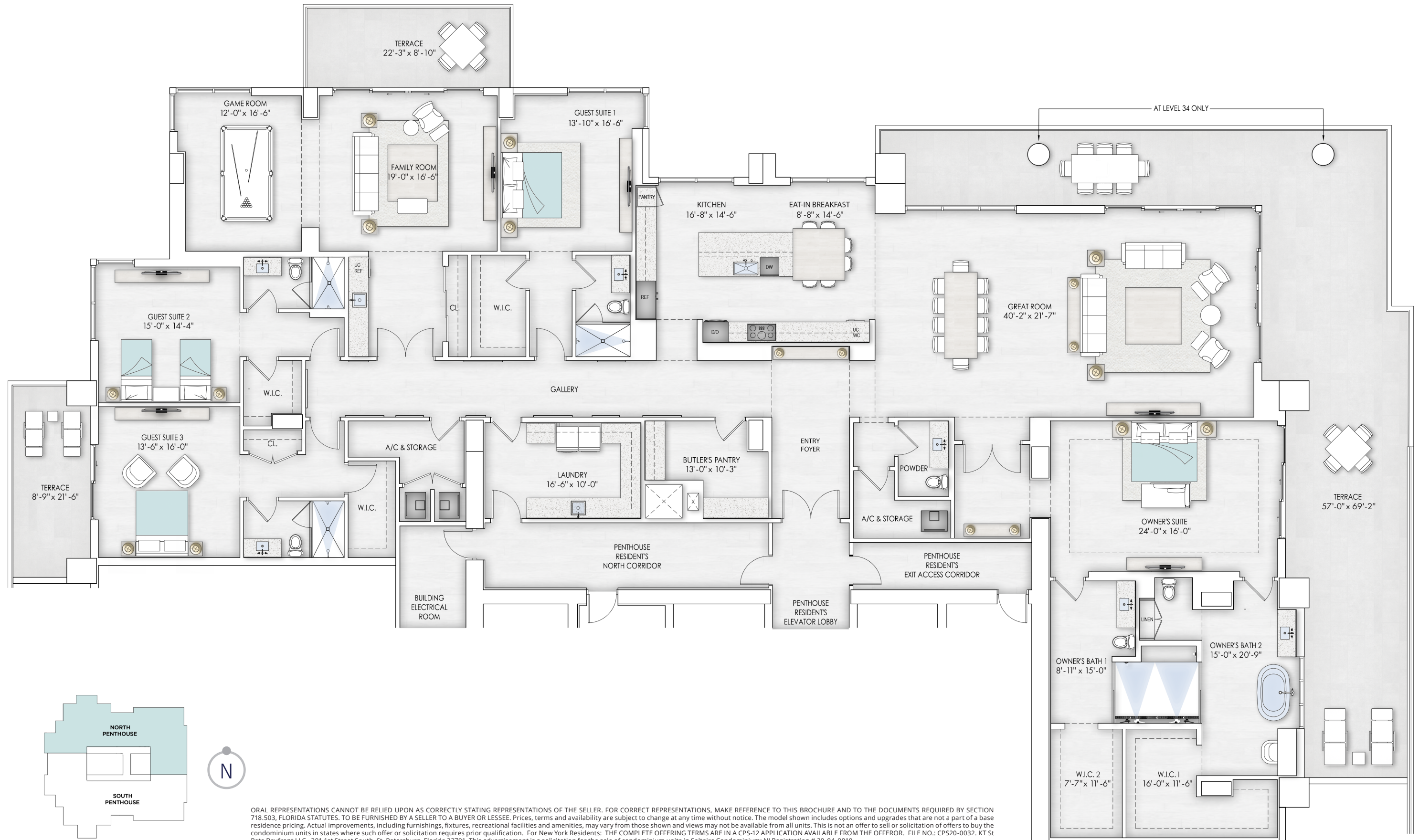




# PENTHOUSE NORTH

4 BEDROOM / 5.5 BATHROOM + LIBRARY

INTERIOR	5,985 SF
EXTERIOR	1,645 SF
<b>TOTAL</b>	<b>7,630 SF</b>



ORAL REPRESENTATIONS CANNOT BE RELIED UPON AS CORRECTLY STATING REPRESENTATIONS OF THE SELLER. FOR CORRECT REPRESENTATIONS, MAKE REFERENCE TO THIS BROCHURE AND TO THE DOCUMENTS REQUIRED BY SECTION 718.503, FLORIDA STATUTES. TO BE FURNISHED BY A SELLER TO A BUYER OR LESSEE. Prices, terms and availability are subject to change at any time without notice. The model shown includes options and upgrades that are not a part of a base residence pricing. Actual improvements, including furnishings, fixtures, recreational facilities and amenities, may vary from those shown and views may not be available from all units. This is not an offer to sell or solicitation of offers to buy the condominium units in states where such offer or solicitation requires prior qualification. For New York Residents: THE COMPLETE OFFERING TERMS ARE IN A CPS-12 APPLICATION AVAILABLE FROM THE OFFEROR. FILE NO.: CPS20-0032. KT St Pete Bayfront LLC, 301 1st Street South, St. Petersburg, Florida 33701. This advertisement is a solicitation for the sale of condominium units in Saltaire Condominium: NJ Registration # 20-04-0010.